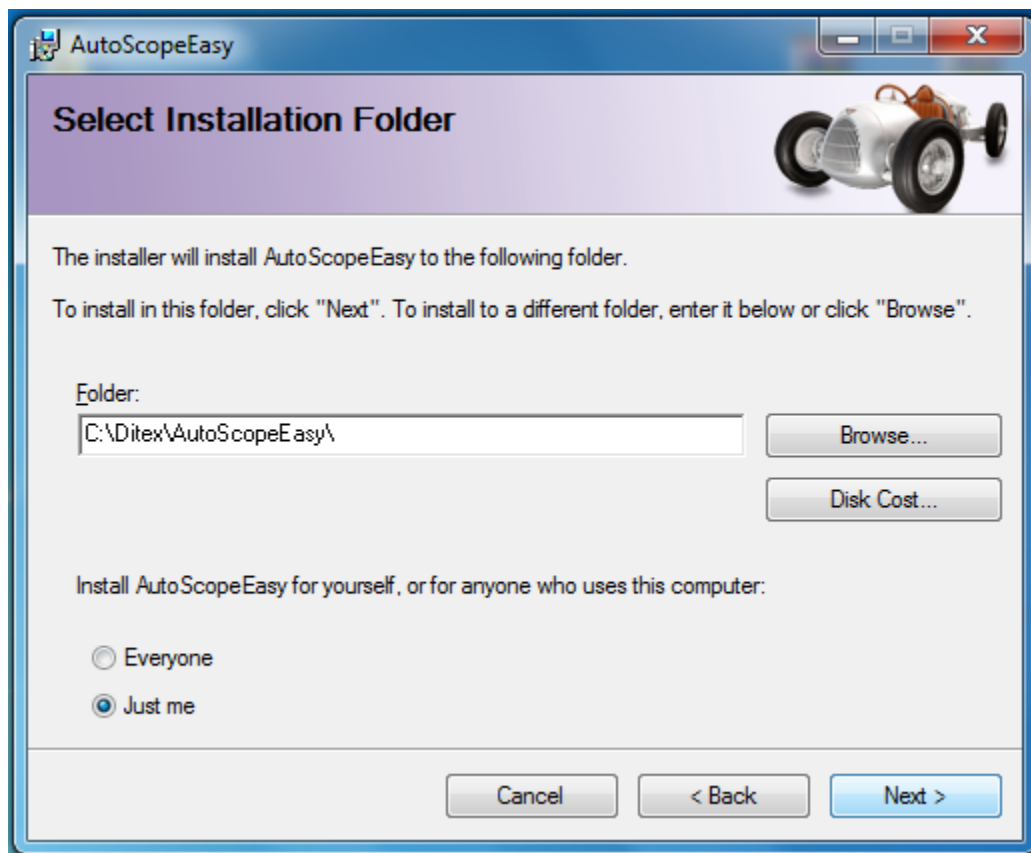


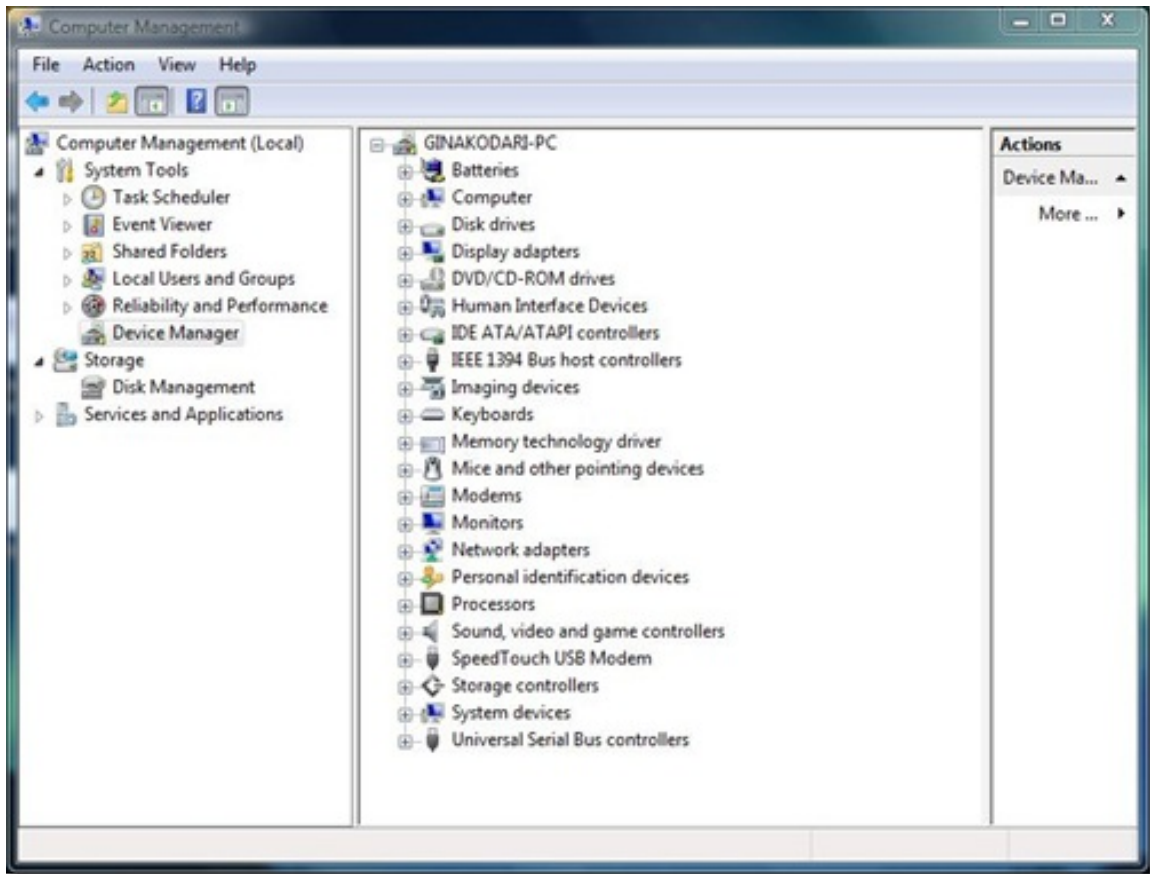
How to Install AutoScope Easy USB Device Drivers Manually in Windows 7 and Windows Vista

Do not insert the USB device into the computer before installation of AutoScope Easy program. The path to find the program is:

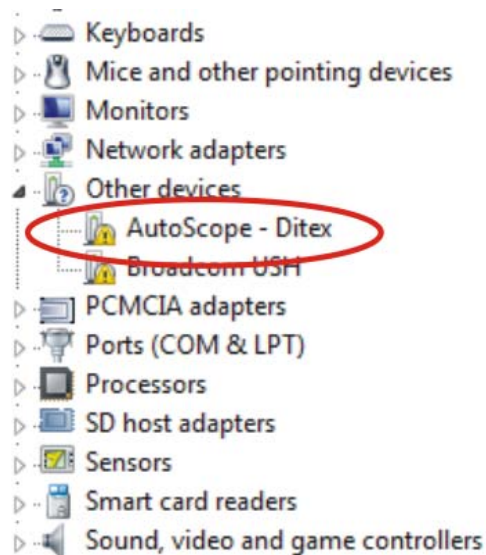


When the program installation is completed, insert your USB interface cable fitted with the device into USB 2.0 port on your computer. Windows 7 automatically selects "the best" driver that is not the right one, but some different. If you don't know how to update your device or hardware driver, then here is the easiest way to do it. Next screenshots show the driver update for the Ditex automotive oscilloscope AutoScope Easy.

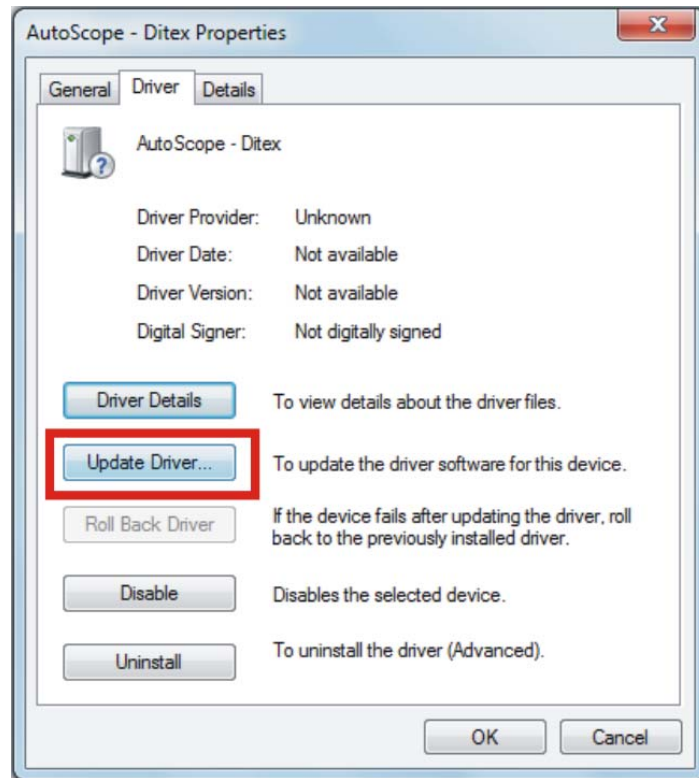
Go to **Start** menu, right-click on **Computers** and select **Manage**. This will bring the **Computer Management** window, now on the left sidebar select **Device Manager** as shown in the screenshot below.



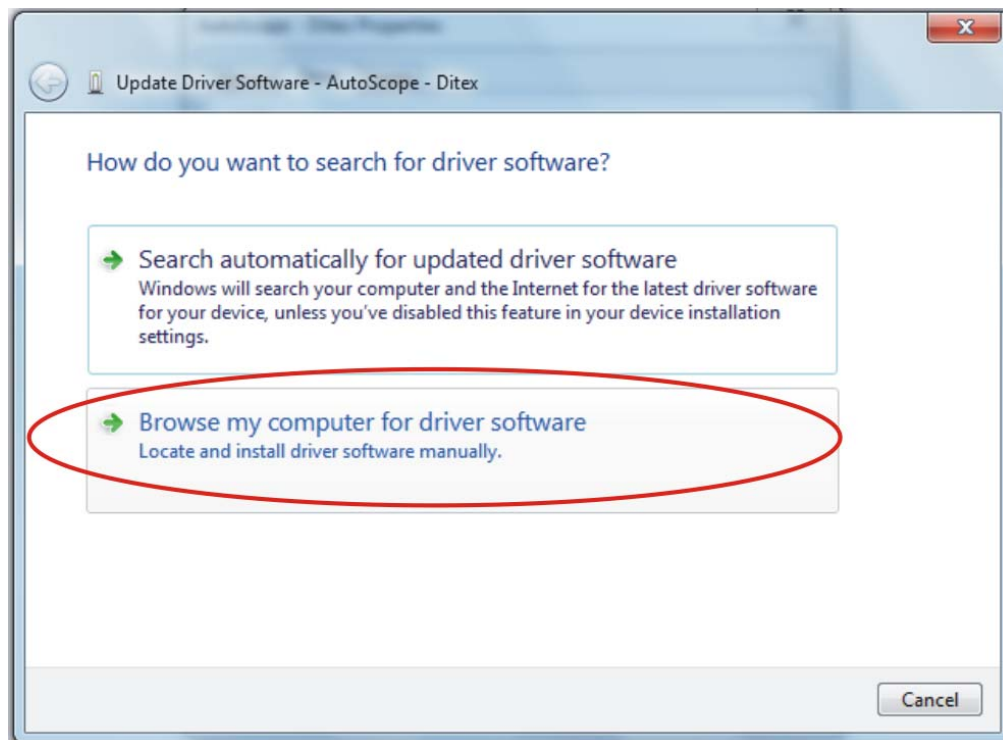
Now, simply select the device which driver you want to update. Go to **AutoScope - Ditex** USB Device:



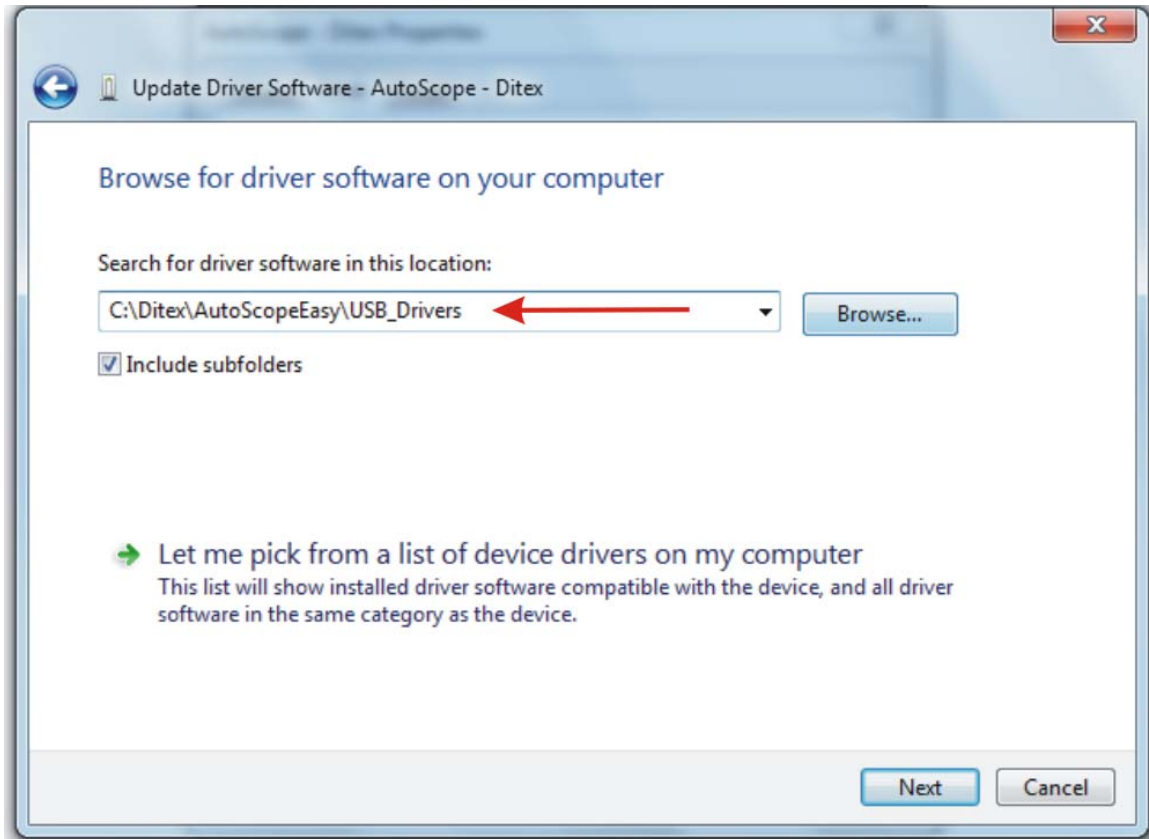
Right click on device's name and finally click **Update Driver** as shown in the screenshot below.



Once you did it a window will open like the one shown below:



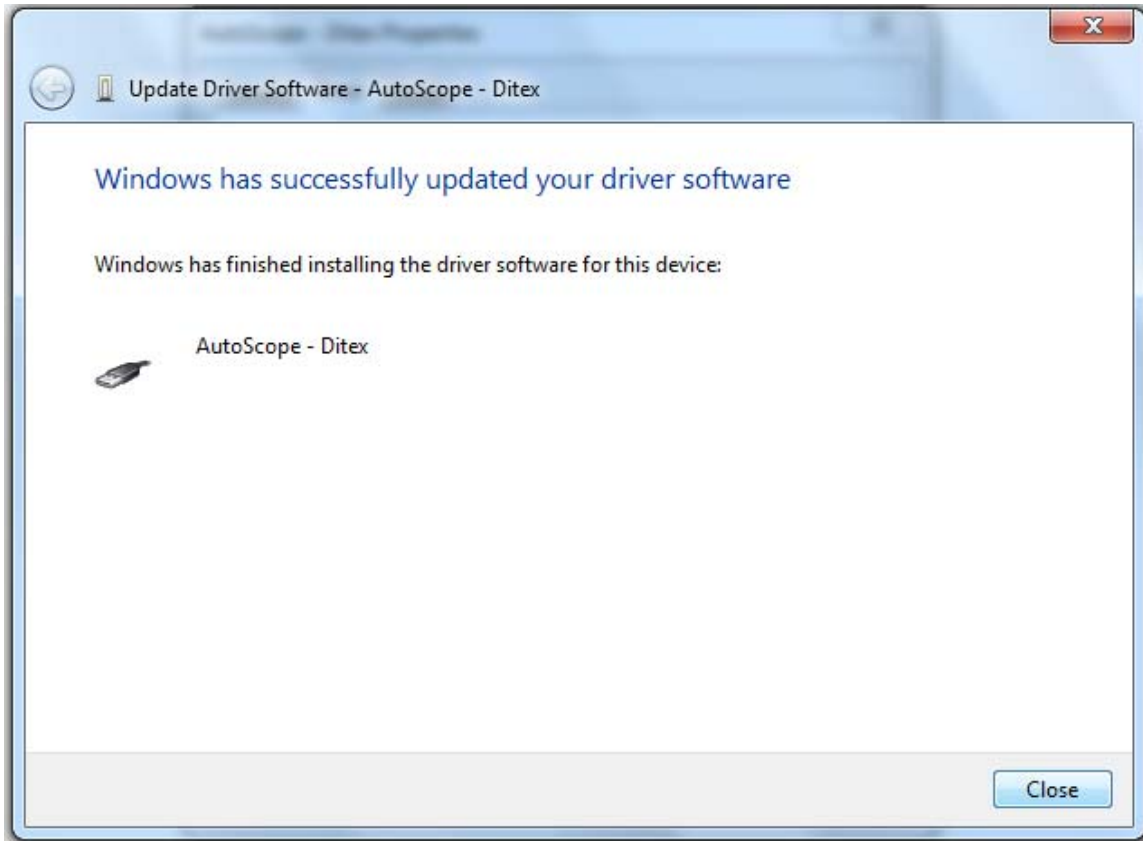
There are two options here, if you want to install a driver that came with your device or hardware, and then select **Browse...** my computer for driver software. It will then open a window similar like the one shown below:



Click **Browse** and locate your driver in folder:


C:\Ditex\AutoScopeEasy\USB_Drivers

Once it's done simply click Next and Windows 7 / Vista will start installing the driver.



Windows has successfully updated your driver software

Windows has finished installing the driver software for this device:

 AutoScope - Ditek

Close